

Print Shop Features

- Print either Bearing or Axle CEPM labels
- Labels and data format conform to AAR CEPM specification
- Customizable field locations
- Company Logo included on the label
- Static text can be placed on the label
- Support for Multiple label layouts and sizes (up to 4" x 6")
- Prints serialized Component ID per CEPM (for new bearings or axles only)
- Includes label verification per CEPM Requirements
 - Verifies all required fields are on in the barcode
 - Validates integrity of fields in the barcode
- Shipping
 - Stores number of bearings or axles shipped, customer and date
- Reports
 - Total bearings or axles by date
 - Total bearings or axles by type and date
 - Total bearing by operator and date
 - Total bearings or axles by customer, type and date

Pricing

Description	Price
Print Shop Label Printing Program <ul style="list-style-type: none"> • Site license • Up to 3 printers (more printers can be added for an additional charge) 	\$4,950
2D Barcode Scanner for Validation and Shipping <ul style="list-style-type: none"> • Scanner with 16 foot cable 	\$400
Label Printer <ul style="list-style-type: none"> • 4 Inches per second • 300 DPI • Ethernet / USB 	\$1,595

<p>Printer supplies</p> <ul style="list-style-type: none"> • 12,100 labels, thermal transfer, aggressive adhesive • Ribbon for labels 	<p>\$795</p>
<p>Annual Software Maintenance</p> <ul style="list-style-type: none"> • 24/7 Tech support • Access to website for free updates • First year included 	<p>\$495</p>

Label Printing

Required Data Entry Fields are in Red

The screenshot displays the 'Print Bearing Labels' window in the PrintShop application. The interface includes a menu bar with 'Menu' and 'Help', and a timestamp of '1/9/2012 5:48:14 PM'. The main area is divided into a left-hand configuration panel and a right-hand label preview area.

Configuration Panel (Left):

- Condition: N
- Journal Size: 7.0x12 - G
- Certificate #: Select ...
- Cage Type: Select ...
- Seal Type: Select ...
- Backing Ring Type: Select ...
- Grease Type: Select ...
- Cup Serial #: 8675309
- Cup Mfg Date: Month: 11, Year: 99
- Timestamp: Use Current Date/Time, 01/09/2012 05:45:47 P
- Component ID:

Label Preview (Right):

Label Format: CEPM Bearing - All Fields 2.5x4

Railroad Bearing Corp
BEARING Size: 7.0 x 12 G

S/N: 8675309
 Mo/Yr: 11 / 99

Facility: GRSE
 Seal: HDL
 Cert: 5A
 Ring: SureFit
 Cage: STD
 Grease: 3201
 Date: 2012-01-09T23:45:49

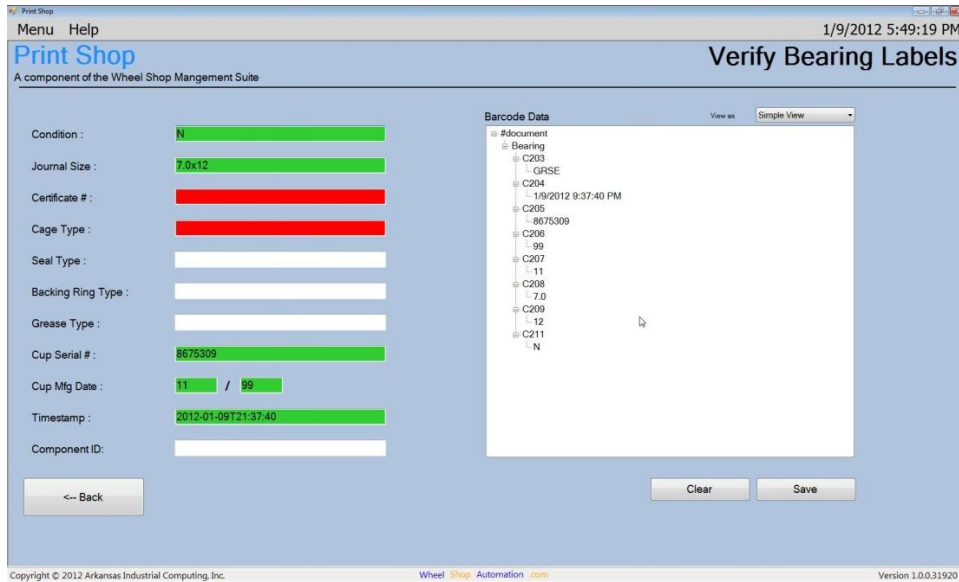
Quantity:

Buttons at the bottom: <- Back, Clear All

Footer: Copyright © 2012 Arkansas Industrial Computing, Inc. Wheel Shop Automation.com Version 1.0.0.31920

Label Verification and Shipping

Green fields are valid - Red fields are invalid



Sample Bearing Label

Actual Size

